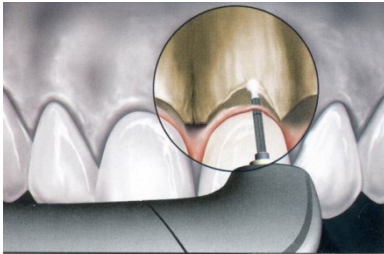


GAIN PERIO/RESTORATIVE ACCESS: *Flaps and Lasers, a Workshop*

Challenged by subgingival margin placement?

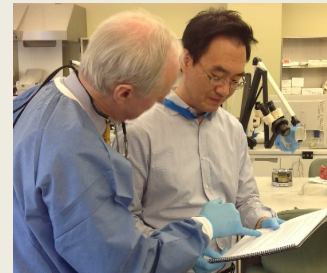
*Restorative dentistry **can** be easier!*



Subgingival margin placement can be a challenge for the restorative dentist, including patient satisfaction with esthetic appearance. In this hands-on workshop, experience manipulation of gingival and bony margins to obtain satisfying restorative results with defining end points and providing essential biologic width. Learn when to use a laser vs. a traditional flap in enhancing a positive result in a timely manner.

Learning Objectives

- Collect data to determine case selection and choose appropriate surgical techniques.
- Define anatomical limitations of surgical restorative access.
- Determine case selection and choose surgical flap/laser techniques to achieve restorative access including flap manipulation, closed laser and suturing methodologies.
- Investigate laser utilization including wavelengths and respective techniques.
- Review indications for mucogingival augmentation including attached gingivae and ridge anatomy.
- Develop post-operative evaluation protocols assessing wound healing and complications.



Samuel B. Low, D.D.S., M.S., M.Ed.

(352) 538-9654

slow@dental.ufl.edu

www.SamLowdds.com

WORKSHOP

Suggested Audience: Dentist and Periodontists

Workshop limited to 30 participants

All equipment supplied by manufacturers

Workshop typically qualifies for up to 6 CEU

